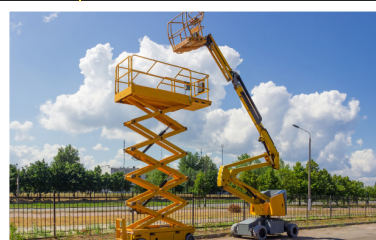


# CONSTRUCTION MATERIAL HANDLING 2021

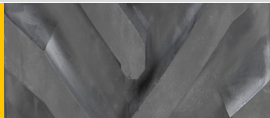


## OUTRIGGER



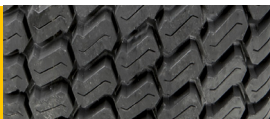
TIRE SIZE	PLY	TIRE PART NUMBER
10-16.5	10	T51010165
12-16.5	12	T51212165
14-17.5	14	T51414175
15-625	16	T51615625
18-625	16	T51618625
33X15.50-16.5	14	T5143315165
445/65D22.5	18	T518445225G
IN240/55D17.5	12	T512240175
IN265/50D20	10	T51026520
IN315/55D20	12	T51231520
IN355/55D625	14	T514355625
IN385/65D19.5	16	T516385195
IN385/65D22.5	16	T516385225
IN445/50D710	18	T518445710
IN445/55D19.5	16	T516445195
IN445/65D22.5	18	T518445225

## OUTRIGGER HF3



TIRE SIZE	PLY	TIRE PART NUMBER
23X10.50-360	6	T50623105360
23X10.50-36	8	T50823105360
26X12D380	8	T5082612380

## LITEFOOT



TIRE SIZE	PLY	TIRE PART NUMBER
23X10.50-360	6	T406231050360
26X12.00-380	8	DKNBC
26X12D430	10	TR4102612430
26X12D460	10	TR4102612460
26X15.00-380	8	T408261500380
33X12D610	12	TR4123312610
33X12LL500	10	DKNCH
33X15.50-16.5	10	TR410331550165
33X16LL500	10	DKNCA

## FLOATMASTER



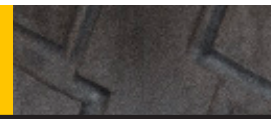
TIRE SIZE	PLY	TIRE PART NUMBER
18-625	16	DKFP5

## STABILIZER



TIRE SIZE	PLY	TIRE PART NUMBER
27X8.50-15	8	T3042785015
10-16.5	10	T30410165
12-16.5	12	T30412165
10.5/80-18	10	T13910105818
12.5/80-18	12	T139121258018
18-22.5	16	T1401618225
18LL900	40	T1084018LL900
39X15LL22.5	14	T5143915225
39X15LL26	14	T2614391526

## LIGHTNING ND



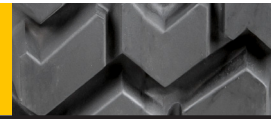
TIRE SIZE	PLY	TIRE PART NUMBER
IN240/55D17.5	12	T412240175

## LIGHTNING FOR TELEHANDLER



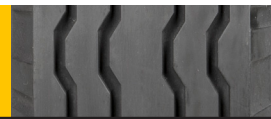
TIRE SIZE	PLY	TIRE PART NUMBER
13.00-24	12	T2012130024
14.00-24	12	T2012140024
370/75-28	14	T20143707528
400/75-28	16	T20164007528

## WEARMASTER



TIRE SIZE	PLY	TIRE PART NUMBER
10-16.5	10	T21010165
12-16.5	12	T21212165
14-17.5	14	T21414175
15-19.5	14	T21415195

## WEARMASTER SPECIAL



TIRE SIZE	PLY	TIRE PART NUMBER
9-14.5	12	T212900145

### CONSTRUCTION & MATERIAL HANDLING

OTR's product line-up for construction and material handling is the result of many years of experience, innovations and a hands-on approach that ensures our products get the job done. Whether focusing on productivity and machine utilization, comfort and safety, or value for the money, OTR's team will help you find the right solution.

## TELEHANDLER/ GRADER TG-09



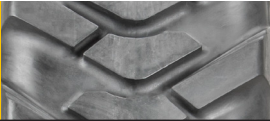
TIRE SIZE	PLY	TIRE PART NUMBER
13.00-24	12	T5212130024
13.00-24	16	T5216130024
14.00-24	12	T5212140024
14.00-24	16	T5216140024
13.00-28	12	T11812130028
14.00-28	12	T11812140028

## TX-90



TIRE SIZE	PLY	TIRE PART NUMBER
14.00-24	14	T19314140024
14.00-28	14	T19314140028P
15.5-28	12	T1931215528P
15.5-30	12	T1931215530P
17.5-25	16	T1931617525
17.5-25	20	T1932017525

## G2 HYBRID



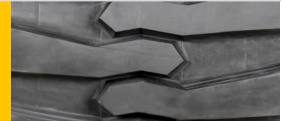
TIRE SIZE	PLY	TIRE PART NUMBER
13.00-28	12	T16112130028
15.5-28	12	T1611215528P
15.5-30	12	T1611215530P

## E3



TIRE SIZE	PLY	TIRE PART NUMBER
15.5-25	12	T1391215525P
17.5-25	16	T1391617525
17.5-25	20	T1392017525
20.5-25	24	T392420525
23.5-25	20	T392023525
23.5-25	24	D3132423525
23.5-25	28	D3132823525
26.5-25	28	T392826525
29.5-25	28	T1082829525
29.5-25	34	T393429525

## R4 HD



TIRE SIZE	PLY	TIRE PART NUMBER
31X15.50-15	12	T1211231155015

## SKS-1



TIRE SIZE	PLY	TIRE PART NUMBER
10-16.5	10	T891010165
12-16.5	12	T891212165
15-19.5	14	T71415195



# TyrLyner®

**TYRLYNER®** is a proprietary rubber urethane securely applied to the inside of a tire's casing to extend life and enhance safe operation. Its "self-healing" technology ensures the tire is sealed when punctured or cut by objects up to ¼" in diameter. The coating is applied at an OTR facility for original equipment manufacturers and distributors who support fleets and owner-operators engaged in construction work, where downtime is NOT an option.

**FOAM-FILL AND WHEEL EXCHANGE PROGRAM** OTR's offers a foam-fill and wheel exchange program to qualified dealers who service rental companies and end users who require immediate replacements for damaged tires. Dealers stock finished assemblies for replacement parts and draw from this stock to replace tires on a real-time basis. Wheels are retrieved, inspected and recirculated as needed. Tires are filled with an OEM-approved resin at an OTR facility, using a proven process so there is no chunking or air pockets which can lead to premature failure. Additionally, OTR has launched a portal to facilitate the end customer's ordering through the dealer/service provider, to provide a user-friendly closed-loop solution.

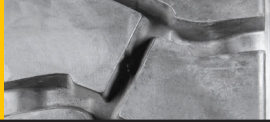


## GSE



TIRE SIZE	PR	TIRE PART NUMBER
4.00-8	8	T131084008
8.00-16.5	8	T13108800165
8.00-16.5	8	T13108800165
8.75-16.5	10	T13110875165
8.75-16.5	10	T13110875165

## IND-5



TIRE SIZE	PR	TIRE PART NUMBER
8.25-15	18	T981882515
10.00-20	18	T9818100020
12.00-20	24	T9824210020
12.00-20	24	T9824210020
12LL610	24	T982421LL610
8.25-15	18	T981882515

## MUDSHARK HF3



TIRE SIZE	PLY	TIRE PART NUMBER
31X15.50-15	10	DKMF5

## MUDSHARK R4



TIRE SIZE	PLY	TIRE PART NUMBER
31.5X13.00-16.5	10	T181103151300165

## SANDSTORM



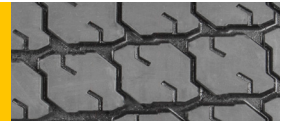
TIRE SIZE	PLY	TIRE PART NUMBER
31X15.50-15	8	T1420831155015

## TRACTION MASTER



TIRE SIZE	PLY	TIRE PART NUMBER
31X15.50-15	8	T130831155015
31X15.50-15	10	T131031155015

## SAND MASTER



TIRE SIZE	PLY	TIRE PART NUMBER
12-16.5	10	T1911012165P
36X18LL625	14	T11143618625
41X18LL.225	20	T11144118225
41X18LL.225	20	T11204118225



**OTR CAN DEVELOP CUSTOM SOLID TIRES FOR SELECT MATERIAL HANDLING VEHICLES.** Our brand—SOLIDBOSS®—is the preeminent brand in solid tires, preferred by OEMs and specified as original equipment for telehandlers, skid-steers and other vehicles. These tires are not only tough and long-lasting, they use apertures to absorb shock and cushion the ride for the operator, contributing to less fatigue on man and machine. Premium rubber compounds, ultra-deep and ultra-wide lugs, and reinforced sidewalls combine with solid tire construction to deliver a robust flat-prevention solution for fleets and owner-operators who cannot afford downtime. Consult with your OTR salesperson for more information.

### CONTACT YOUR OTR ACCOUNT MANAGER

for other excellent opportunities on our SolidBoss assemblies, TransAmerican Rubber Tube Program, Skid Loader Wheels, Backhoe Wheels and Telehandler Wheels, Foam filled Tire & Wheel Exchange Program.

