

LAWN•GARDEN 2021

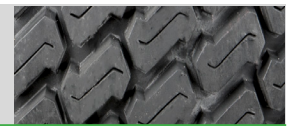


GRASS MASTER



TIRE SIZE	PR	TIRE PART NUMBER
11X4.00-5	2	T802114005
15X6.00-6	4	T804156006
16X6.50-8	4	T804166508
16X7.50-8	4	T804167508
18X10.50-10	4	T80418105010FP
18X6.50-10	4	T8041865010
18X6.50-8	4	T804186508
18X7.00-8	4	T804187008
18X7.50-8	4	T804187508
18X8.50-10	4	T8041885010
18X8.50-8	4	T804188508FP
18X8.50-8	4	T804188508
18X9.50-8	4	T804189508FP
18X9.50-8	4	T804189508
20X10.00-10	4	T80420100010
20X10.00-8	4	T8042010008
20X10.50-8	4	T8042010508FP
20X12.00-10	4	T80420120010
20X6.50-10	4	T8042065010
20X8.00-10	4	T8042080010
20X8.00-8	4	T804208008
22X11.00-10	4	T80422110010
22X12.00-12	4	T80422120012P
22X9.50-12	2	T8042295012FP
23X10.50-12	4	T80423105012
23X9.50-12	4	T8042395012FP
23X9.50-12	4	T8042395012
24X12.00-12	4	T80424120012
24X12.00-12	4	T1620424120012
24X12.00-12	4	T80424120012FP
24X12.00-14	4	T80424120014
24X9.50-12	4	T8042495012FP
24X9.50-14	4	T8042495014
25X10.00-12	4	T80425100012
25X12.00-12	4	T80425120012
25X8.50-14	4	T8042585014FP
25X9.00-12	4	T8042590012
26X10.50-12	4	T80426105012
26X12.00-12	4	T80426120012
26X12.00-12	6	T80626120012
26X12.00-16	4	T80426120016FP
26X9.50-12	4	T8042695012FP

LITEFOOT



TIRE SIZE	PR	TIRE P/N
22.5X10.00-8	4	T40422510008
22X10.00-10	4	T40422100010
22X11.00-10	4	T40422110010FP
22X8.50-12	4	T4042285012
22X9.50-10	4	T4042295010
23X10.50-12	4	T4042310512
23X11.00-10	4	T40423110010FP
23X8.50-12	4	T4042385012
23X9.50-12	4	T4042395012
24X9.50-12	4	T4042495012
26X12.00-12	4	T40426120012
26X12.00-12	4	T40426120012FP
26X14.00-12	4	T40426140012

ZERO-T



TIRE SIZE	PR	TIRE PART NUMBER
13X6.50-6	4	T13304136506
16X7.50-8	4	T13304167508
16X8.00-8	4	T13304168008
18X8.50-10	4	T133041885010
20X10.00-10	4	T1330420100010
20X12.00-10	4	T1330420120010
20X8.00-10	4	T133042080010FP
22X11.00-10	4	T1330422110010
23X10.50-12	4	T1330423105012
23X8.50-12	4	T133042385012
24X10.50-12	4	T1330424105012
24X12.00-10	4	T1330424120010
24X12.00-12	4	T1600424120012
24X12.00-12	4	T1330424120012

HBR
LAWN MASTER

TIRE SIZE	PR	TIRE PART NUMBER
15X6.00-8	2	T8702156008
20X8.50-12	2	T87022085012FP
22X10.00-14	4	T870422100014
24X12.00-14	4	T870424120014
24X9.50-14	4	T87042495014
26X12.00-16	4	T870426120016

LAWN BOSS



TIRE SIZE	PR	TIRE PART NUMBER
18X8.50-8	4	T11904188508
20X10.00-10	4	T1190420100010
20X10.00-12	4	T1190420100012
20X10.00-8	4	T119042010008
20X12.00-10	4	T1190420120010
22.5X10.00-8	4	T1190422510008
22X9.50-10	4	T119042295010
23X10.00-8	4	T119042310008
23X10.50-12	4	T1190423105012
24X12.00-10	4	T1190424120010
25X12.00-9	4	T119042512009

350 MAG



TIRE SIZE	PR	TIRE PART NUMBER
16X6.50-8	4	T243504166508
18X10.50-10	6	T24350618105010
18X8.50-10	4	T2435041885010
18X8.50-10	6	T2435061885010
20X10.00-8	4	T2435042010008
22X11.00-10	6	T24350622110010
23X10.50-12	6	T24350623105012
26X12.00-12	6	T24350626120012

CHEVRON



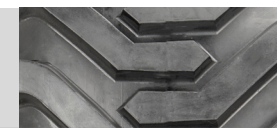
TIRE SIZE	PR	TIRE PART NUMBER
11X4.00-4	4	T10104114004
13X5.00-6	4	T5604135006
13X6.50-6	4	T5604136506
15X6.00-6	4	T10104156006
16X6.50-8	4	T10104166508
16X7.50-8	4	T10104167508
18X6.50-8	4	T10104186508
18X8.50-8	4	T5604188508
18X9.50-8	4	T10104189508
20X10.00-10	4	T1010420100010
20X10.00-8	4	T101042010008
20X8.00-10	4	T101042080010
20X8.00-8	4	T10104208008
24X13.00-12	4	T560424130012
26.5X14.00-12	4	T5604265140012
26.5X14.00-12	6	T7506265140012P
26X12.00-14	6	T560626120014
29X14.00-15	12	T561229140015

XT-41



TIRE SIZE	PR	TIRE PART NUMBER
12-16.5	6	T1980612165
18X8.50-10	4	T198041885010
23X8.50-12	6	T198062385012
26X12.00-12	4	T1980426120012

GARDEN MASTER



TIRE SIZE	PR	TIRE PART NUMBER
18X8.50-10	4	T99041885010
26X12.00-12	4	T990426120012

LAWN TRAC



TIRE SIZE	PR	TIRE PART NUMBER
16X7.50-8	4	T10004167508
16X7.50-8	6	T10006167508
18X8.50-10	4	T10004188501010
18X8.50-10	8	T100081885010
18X8.50-10	4	T100041885010
18X8.50-8	4	T10004188508
18X9.50-8	4	TR10004189508
18X9.50-8	6	TR10006189508
23X10.50-12	4	T1000423105012
24X12.00-12	4	T1000424120012
26X10.00-12	4	T1000426100012
26X12.00-12 W/RG	4	T261212025
26X12.00-12	4	T1000426120012

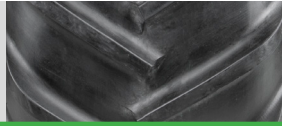
FIELD MASTER



TIRE SIZE	PR	TIRE PART NUMBER
13X5.00-6	4	T10404135006
16X6.50-8	6	T10406166508
18X9.50-8	4	T10404189508
20X10.00-8	4	T104042010008
23X10.50-12	6	T1040623105012
26X10.00-12	6	T104062610012
26X10.00-12	8	T104082610012
4.80/4.00-8	4	T188044804008

LAWN & GARDEN & PRODUCTS

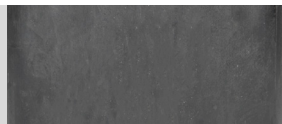
OTR's product line-up for turf care is the result of many years of experience, innovations and a hands-on approach that ensures our products get the job done. Whether focusing on productivity and machine utilization, comfort and safety, or value for the money, OTR's team will help you find the right solution.

22 MAG

TIRE SIZE	PR	TIRE PART NUMBER
20X10.00-8	4	T13042010008
20X8.00-10	4	T2404222080010
21X11.00-8	4	T2404222111008
22.5X11.00-10	4	T240422225110010
22X11.00-10	4	T24042222110010
23X10.50-12	4	T24042223105012
24X12.00-12	4	T24042224120012

SMOOTH

TIRE SIZE	PR	TIRE PART NUMBER
11X4.00-5	4	T5504114005
11X4.00-5	4	T5504114005 FP
11X5.00-5	4	T5504115005
11X6.00-5	4	T5504116005
13X5.00-6	4	T5504135006
13X6.50-6	4	T5504136506
13X8.00-6	4	T5504138006
15X6.00-6	8	T5508156006
16X6.50-8	4	T5504166508
16X8.50-8	8	T5508168508
18X10.50-10	4	T550418105010
18X10.50-8	4	T55041810508
18X9.50-8	4	T5504189508
20X10.00-10	2	T550220100010
22X12.00-12	4	T550422120012P

SEMI PNEUMATIC

TIRE SIZE	TIRE PART NUMBER
11X6.00-5	TSPS116005
13X5.00-6	TSPS135006325
13X6.50-6	TSPS136506450
15X6.00-6	TSPS156006450
15X6.50-8	TSPS156508
8X3.00-4	TSPS83004
9X3.50-4	TSPS93504225

NDX™
TIRE & WHEEL SYSTEM
THE TIRE THAT NEVER
GOES FLAT.

otrwheel.com/ndxairless tire/

OTR'S GAME-CHANGING, PATENT-PENDING TIRE & WHEEL SYSTEMS LAST OVER 2X LONGER THAN OTHER AIRLESS OPTIONS.

- ✓ No flat tires = NO downtime or loss of productivity.
- ✓ Long-lasting & ultra-durable—ideal for tough jobs.
- ✓ Exceptional traction, grip & handling, even on slopes.
- ✓ Comfortable ride, same or better than pneumatics.
- ✓ Wide contact patch enhances stability & braking.
- ✓ Supports loaded grass catchers, no impact on tire.

**RIB**

TIRE SIZE	PR	TIRE P/N
11X4.00-5	4	T1504114005
13X5.00-6	4	T1504135006
13X6.50-6	4	T1504136506
13X6.50-6	4	T11004136506
15X6.00-6	4	T1504156006
16X6.50-8	4	T6204166508
18X8.50-8	4	TR6206188508
18X9.50-8	4	T6204189508
20X10.00-10	4	T150420100010
21X7.00-12	16	T125162170012
23X10.50-14	6	T150623105014
24X8.00-14	20	T125202480014
25X7.00-18	8	T125082570018 & T126082570018 & T141082570018
26X9.00-14.5	16	T1252426900145
27X8.00-18	8	T125082780018
6.70-15 SL	8	T2020867015
7.60-15 SL	8	T2020876015

ROUGH TAMER

TIRE SIZE	PR	TIRE PART NUMBER
16X6.50-8	2	T11602166508
16X6.50-8	4	T11604166508
4.10/3.50-4	2	T116024103504
4.10/3.50-	4	T116044103504
4.10/3.50-5	2	T116024103505
4.10/3.50-5	4	T116044103505
4.10/3.50-6	2	T116024103506
4.10/3.50-6	4	T116044103506
4.80/4.00-8	4	T116044804008

SAW TOOTH

TIRE SIZE	PR	TIRE PART NUMBER
4.10/3.50-4	4	T4103504005
4.10/3.50-6	4	T60644103506